

AGENDA

Meeting: ROYAL WOOTTON BASSETT AND CRICKLADE AREA BOARD
Place: Bradon Forest School, The Peak, Purton, SN5 4AT
Date: Wednesday 23 January 2013
Time: 6.30 pm

Including the Parishes of Braydon, Broad Town, Clyffe Pypard, Cricklade, Latton, Lydiard Millicent, Lydiard Tregoz, Lyneham & Bradenstoke, Marston Meysey, Purton, Tockenham and Royal Wootton Bassett.

The Area Board welcomes and invites contributions from members of the public. The Chairman will try to ensure that everyone who wishes to speak will have the opportunity to do so.

If you have any requirements that would make your attendance at the meeting easier, please contact the Democratic Services Officer.

Refreshments and networking opportunities will be available from 6.00 pm.

Please direct any enquiries on this agenda to:

Alexa Smith (Democratic Services Officer), 01249 706610 / alexa.smith@wiltshire.gov.uk or Penny Bell (Community Area Manager – Royal Wootton Bassett and Cricklade Area), 01249 706613 / penny.bell@wiltshire.gov.uk.

All the papers connected with this meeting are available on the Council's website at www.wiltshire.gov.uk.

Press enquiries to Communications on direct lines 01225 713114/713115.

Wiltshire Councillors

Allison Bucknell	Lyneham
Peter Colmer (Vice Chairman)	Cricklade & Latton
Peter Doyle (Chairman)	Royal Wootton Bassett South
Mollie Groom	Royal Wootton Bassett East
Jacqui Lay	Purton
Bill Roberts	Royal Wootton Bassett North

Items to be considered	Time
<p>1 Chairman's Welcome and Introductions</p>	<p>6.30pm</p>
<p>2 Apologies for Absence</p>	
<p>3 Minutes (Pages 1 - 10)</p> <p>To approve the minutes of the meeting held on Wednesday 28 November 2012.</p>	
<p>4 Declarations of Interest</p> <p>Councillors are requested to declare any pecuniary or non-pecuniary interests or dispensations granted by the Standards Committee.</p>	
<p>5 Delegated Authority Over the Pre-Elections Period</p> <p>Recommendation</p> <p>That in respect of urgent matters that may arise from time to time between meetings of an Area Board, the Community Area Manager, in consultation with the unitary councillors on the Area Board, be granted delegated authority to make any necessary financial decisions. A report explaining the decision and the reasons why it was considered to be urgent shall be reported to the next ordinary meeting of the area board to ensure that such decisions are subject to public examination.</p> <p>Reason for Recommendation</p> <p>To facilitate the smooth and efficient running of Area Board business and to reduce the need for unnecessary extraordinary meetings.</p>	
<p>6 Wiltshire - The Wider Picture (Pages 11 - 26)</p> <p>News and information on what's going on in your local community and across the county:</p> <ul style="list-style-type: none"> i. Youth Service Update (attached) ii. Wiltshire Online: Connectivity and Provision (attached) iii. Legacy for Wiltshire (attached) iv. Joint Strategic Assessment for Health and Wellbeing 2012-13 (attached) v. Welfare Reform in Wiltshire (attached) vi. Area Board Review 2009 – 2013 (attached). 	
<p>7 Spotlight on Parishes and Partners (Pages 27 - 36)</p> <p>To receive written updates from our key partners, including:</p>	

- i. Wiltshire Police (attached)
- ii. Wiltshire Fire and Rescue Service (attached)
- iii. Military Civilian Integration Partnership (attached)
- iv. Defence Technical Training (see item 9)
- v. NHS Wiltshire (attached)
- vi. Parish and Town Councils (attached)
- vii. Neighbourhood Planning Working Group
- viii. Community-Led Planning Steering Groups (NEW-V)
- ix. Chambers of Commerce/Business Associations
- x. Community Groups
- xi. Housing Associations.

8 Task Group Reports and Decisions (Pages 37 - 42)

To consider reports from the following task groups and make any necessary decisions:

- i. Cricklade Shadow Community Operations Board
- i. Royal Wootton Bassett Shadow Community Operations Board
- i. Dog Fouling Task Group
- /. Recommendations from Community Area Transport Group (CATG), as follows:

At the meeting of the CATG on Thursday 10 January 2013, the CATG considered assessments of substantive schemes from the Highways Engineer, and decided to make the following recommendations to the Area Board:

- 4a. To allocate the sum of approximately £1,500 from the remaining CATG budget to introduce additional 'SLOW' markings including rumble strips on both approaches to Bremhill Bridge, Purton.
- 4b. To allocate the remaining sum of approximately £1,300 from the CATG budget, plus up to £15,000 from the Area Board's budget (subject to availability), to the development of a new footway at the C28, Lydiard Green.

9 The Future of Policing in Wiltshire

6.45 pm

An opportunity to hear from Wiltshire's Police and Crime Commissioner, Angus Macpherson, about the future of policing in Wiltshire and the role of the Commissioner. There will then be an opportunity to ask questions of the Commissioner.

10 Lyneham Defence Technical Training

7.30 pm

To receive pre-application details of the planning application to be submitted by the MOD for the delivery of Defence Technical Training at Lyneham.

11 Governance Arrangements for Primary School Provision

8.00 pm

linked to the Ridgeway Farm Development

Information will be provided about the process to decide on school governance arrangements and appointment of a governing body in advance of delivering a new primary school linked to the Ridgeway Farm development.

12 **Get It Off Your Chest!**

8.15 pm

An open, public question and answer session to raise issues with your local representative (please note that if answers cannot be provided on the night, written responses will be provided after the meeting).

13 **Community Asset Transfer**

To consider the transfer of land at Swindon Road, Royal Wootton Bassett, to Royal Wootton Bassett Town Council (report to follow).

14 **Evaluation and Close**

8.30 pm

The Chairman will invite any remaining questions from the floor.

The meeting is asked to note the future meeting dates below and complete the evaluation.

Future Meeting Dates

Wednesday 27 February 2013*

6.30pm

Lyneham Primary School

**Extraordinary meeting for the consideration of funding applications*

Wednesday 22 May 2013

6.30pm

Cricklade Town Hall

MINUTES

Meeting: ROYAL WOOTTON BASSETT AND CRICKLADE AREA BOARD
Place: St Bartholomew's C of E School, The Rosary, Royal Wootton Bassett
SN4 8AZ
Date: 28 November 2012
Start Time: 6.00 pm
Finish Time: 9.00 pm

Please direct any enquiries on these minutes to:

Alexa Smith, direct line 01249 706610 or e-mail alexa.smith@wiltshire.gov.uk

Papers available on the Council's website at www.wiltshire.gov.uk

In Attendance:

Wiltshire Councillors

Cllr Peter Doyle (Chairman), Cllr Jacqui Lay, Cllr Allison Bucknell, Cllr Peter Colmer (Vice Chairman), Cllr Mollie Groom and Cllr Bill Roberts

Wiltshire Council Officers

Penny Bell (Community Area Manager), Laurie Bell (Service Director, Communications), Richard Broadhead (Rights of Way and Countryside Manager), Alan Byrne (Technical Support Officer) and Alexa Smith (Democratic Services Officer)

Town and Parish Councillors

Cricklade Town Council - Terri Robertson, Ruth Szybiak and David Tetlow

Latton Parish Council - Graham Blunden

Lyneham and Bradenstoke Parish Council - Deborah Bourne (Parish Clerk), Ron Glover and John Webb

Royal Wootton Bassett Town Council - Mary Champion, Sue Doyle and Jenny Stratton

Tockenhan Parish Council - Diana King

Partners

Wiltshire Police – Sergeant Martin Alvis

Wiltshire Fire and Rescue Service – Mike Franklin

MOD – Capt. Bob Rusbridger

Total in attendance: 45

<u>Agenda Item No.</u>	<u>Summary of Issues Discussed and Decision</u>
1	<p><u>Chairman's Welcome, Introductions and Announcements</u></p> <p>The Chairman greeted everyone to the meeting of the Royal Wootton Bassett & Cricklade Area Board and introduced the councillors and officers present. He formally welcomed Penny Bell, in her new role as Community Area Manager, and Alexa Smith, as Democratic Services Officer.</p>
2	<p><u>Apologies for Absence</u></p> <p>Apologies for absence were received from Mike Bell (Purton Parish Council), Johnathan Bourne (Town Clerk at Royal Wootton Bassett Town Council), Paul Harrison (Royal Wootton Bassett Sports Association), Michael Leighfield, Dr Gary Mantle (Wiltshire Wildlife Trust), Matthew Millet (Cotswold Water Park Trust), Veronica Stubbings (Broad Town Parish Council), Ray Thomas (Purton Parish Council), Inspector Mark Thomson (Wiltshire Police) and Chris Wannell (Royal Wootton Bassett Town Council).</p>
3	<p><u>Minutes</u></p> <p><u>Decision</u> The minutes of the meeting held on 26 September 2012 were agreed a correct record and signed by the Chairman.</p>
4	<p><u>Declarations of Interest</u></p> <p>There were no declarations of interest.</p>
5	<p><u>Wiltshire - The Wider Picture</u></p> <p>The Chairman explained that this item had been called Chairman's Announcements at previous meetings. The information provided about Informal Adult Education, Victim Support, Community-Led Planning, Neighbourhood Planning and Youth Funding was available in the agenda pack.</p> <p>New information was provided about development plans for the Lyneham site consultation. The proposals to create a Defence Technical Training College at Lyneham were currently in development by the Defence Infrastructure Organisation (DIO), supported by technical advisors AMEC.</p> <p>The Defence Technical Training Change Programme (DTTCP) represented the MOD's plan for delivering cost effective technical training for military personnel. As part of this, the existing technical training given at Bordon and Arborfield would be transferred to the Lyneham site by the end of 2015, following its planned closure as an RAF unit at the end of 2012.</p> <p>The long term goal was to move more MOD Technical Training Units into</p>

	<p>Lyneham, in a series of tranches that stretched beyond 2015.</p> <p>A questionnaire had been prepared to gain initial feedback on the proposal from local residents and other interested parties. This would be available until December 21 2012. Please see the webpage via the following link to complete the questionnaire: http://www.mod.uk/DefenceInternet/AboutDefence/CorporatePublications/ConsultationsandCommunications/PublicConsultations/DevelopmentPlansForTheLynehamSiteConsultation.htm. Hard copies were also available at Lyneham Library and could be obtained from Lyneham & Bradenstoke Parish Council. Please contact the Clerk on 07801 440076.</p> <p>Public exhibitions would be held in Spring 2013 when draft plans for the redevelopment of Lyneham would be presented at a series of Defence Infrastructure Organisation drop in sessions. Further details of these events would be provided as they became available.</p>
6	<p><u>Spotlight on Parishes and Partners</u></p> <p>The Chairman explained that this item had been called Partner Updates at previous meetings. Updates from partners were received as follows:</p> <ul style="list-style-type: none"> i. Wiltshire Police The written update was noted. Sergeant Martin Alvis reported that a Facebook site had been launched for Royal Wootton Bassett & Cricklade Area Board. Please 'like' the page if you would like to receive regular updates. Inspector Chris Martin had left the community area and his replacement would be Inspector Mark Thomson. The Chairman thanked Inspector Martin for his hard work in the community area and extended a warm welcome to Inspector Thomson. ii. Wiltshire Fire and Rescue Service The written update was noted. Mike Franklin added that Wiltshire Fire and Rescue Service also had a Facebook page. There had been a local incident in which five members of a family had been treated for carbon monoxide poisoning; this highlighted the importance of having a carbon monoxide detector fitted. Please get your chimney swept if you intend to burn fossil fuels over the winter and visit the Wiltshire Fire and Rescue Service website if you would like further information on having your Christmas decorations tested for fire safety purposes: http://www.wiltshire.gov.uk/. iii. Military Civilian Integration Partnership The written update was noted. iv. Defence Technical Training The written update was noted.

	<ul style="list-style-type: none"> v. NHS Wiltshire The written update was noted. vi. Parish and Town Councils The written update from Cricklade Town Council was noted. vii. Youth Services The Chairman of the area board welcomed the young people present at the meeting and representatives from the local schools. viii. Neighbourhood Planning Please find the update provided as item 5. ix. Community-Led Planning Steering Groups Please find the update provided as item 5. x. Chambers of Commerce/Business Associations The written update from Royal Wootton Bassett Chamber of Commerce was noted. xi. Community Groups The written updates from Wootton Bassett Sports Association and Wiltshire Involvement Network were noted.
7	<p><u>Task Group Reports and Decisions</u></p> <p>Updates were received as follows:</p> <ul style="list-style-type: none"> i. Community Area Transport Group The next meeting would be held on 10 January and invitations for this would be sent shortly. ii. Cricklade Shadow Community Operations Board (COB) Cricklade COB were pleased to report that funding from Cabinet had been received and the group were now working on a design brief. iii. Dog Fouling Task Group A meeting was scheduled for 4 December and feedback would be provided on this at the next area board meeting.
8	<p><u>Community Area Grants</u></p> <p>The area board considered the following applications to the Community Area Grant Scheme:</p> <ul style="list-style-type: none"> i. <u>Thames Pre School</u> The sum of £395 was requested for the provision of six outdoor waterproof coats for staff.

	<p><u>Decision</u> The area board awarded the sum of £395 to Thames Pre School.</p> <p><i>Reason: The application met the Community Area Grant Criteria 2012/13 and the application would enable the staff to be suitably clothed to encourage the children's play during wet weather.</i></p> <p>ii. <u>Cricklade United Church/Community Hall</u> The sum of £600 was requested towards the provision of fixed emergency lighting for the hall.</p> <p><u>Decision</u> The area board awarded the sum of £600 to Cricklade United Church/Community Hall.</p> <p><i>Reason: The application met the Community Area Grant Criteria 2012/13 and the installation of fixed emergency lighting would bring the hall up to date on health and safety responsibilities providing a safe environment for hall users.</i></p>
9	<p><u>Break</u></p> <p>A short break was held for refreshments and networking opportunities.</p>
10	<p><u>Valuing the Wider Local Environment</u></p> <p>The Chairman introduced the second part of the meeting and explained this had an environmental theme.</p> <p>A presentation was given by Stephen Davis, Head of Conservation Policy at Wiltshire Wildlife Trust. This covered the following main points:</p> <ul style="list-style-type: none"> • The State of the Environment report – the first of a series of annual reports was published in May 2012 to give an overview and analysis of a range of environmental data and issues. • Wiltshire Intelligence Network – this website draws together a wide range of online sources and gives easy access to current information: www.intelligencenetwork.org.uk. • Good news overall about the community area – with over 90% green space and extensive Areas of Outstanding Natural Beauty. • Some bad news about the community area – for example water levels and quality were of great concern. • Local issues – such as air pollution from road traffic, the area of wildlife-rich sites, water quality due to diffuse pollution from farming, low river flows, management of flood risk and access to public green space. <p>Given that Matthew Millett had provided his apologies for the meeting, Councillor Colmer stepped in to provide information about the Cotswold Water Park Trust,</p>

which the Chairman thanked him for doing. This included:

- A map and aerial photograph of the Cotswold Water Park today – including farmland, quarries, lakes, development and local communities.
- Why the area was of international and national importance – for one reason because of its wintering waterbirds.
- How the Cotswold Water Park provided for the public, and in particular the inhabitants of Gloucestershire and Wiltshire, facilities for education, conservation, recreation and leisure.
- Cotswold Water Park activities – including the Biodiversity Action Plan, research and monitoring, information and visitor facilities, new foot/cycle paths, production of leisure guides and maps, education programmes and community events.
- Mineral extraction in the local area – currently 8 mineral companies were extracting at 10 quarries, covering approximately 400 hectares. There was planning permission for a further 310 hectares and a further 550 hectares in 'preferred areas' in county mineral plans.
- The Cotswold Water Park Biodiversity Action Plan – including 10 Habitat Action Plans and 15 Species Action Plans.
- The vision for the local area – better opportunities to explore and appreciate what will become one of the largest man-made wetlands in Europe.

The final presentation for this part of the meeting was given by Andrew Lord, Planning Advisor for Wessex Area of Outstanding Natural Beauty. The Management Plan for the North Wessex Downs Area of Outstanding Natural Beauty was available to view on their website and comments on this would be appreciated as it would soon be under review: www.northwessexdowns.org.uk.

Andrew covered:

- The North Wessex Downs Area of Outstanding Natural Beauty Management Plan – intended to provide a vision for all groups and organisations who seek to contribute to the conservation and enjoyment of the Area.
- Walking and cycling in the Area.
- 'Our Land – Experiences to Treasure' project - £1 million was available to promote sustainable and responsible tourism across nine of the South East protected landscapes.
- Rural development grants – of up to £50,000 available to farmers, foresters, community enterprises and rural-based businesses.
- Nature Improvement Areas and the Big Chalk Nature Improvement Area – to provide more joined up habitat on a bigger scale.

The three presentations were followed by a question and answer session which also involved Richard Broadhead, Wiltshire Council Rights of Way and Countryside Manager, and Councillor Dick Tonge, Wiltshire Council Cabinet Member for Highways and Transport. Issues discussed at this stage were:

	<ul style="list-style-type: none"> • Liaison with local schools – Wiltshire Wildlife Trust was very interested in working with local schools and was involved in a number of projects, such as an outdoor classroom for pupils with special educational needs at Springfields Academy in Calne. An issue with involvement with schools was funding opportunities. • How organisations should work together in the future – Local Nature Partnerships encouraged sectors to get together and comprised of Wiltshire Wildlife Trust, the energy sector, local authorities, Youth Parliament and more. The aim of the Partnerships was to build bridges and make connections. • Concern was raised over the impact of further mineral extraction in the north on traffic – Councillor Tonge commented that key sites needed to go to the Inspector for approval and individual sites would require planning applications. It was also unlikely that sites would open at the same time. • Flooding – in general the community area had been very fortunate thanks to the hard work already put in. Wiltshire Council was working with the Environment Agency to minimise any problems which were mostly along rivers. The Chairman added that he would invite the Environment Agency to a future area board meeting. • The footpath network – 3,800 miles of footpath were looked after by Wiltshire Council with a basic budget of £176,000 available. • The urbanisation of country roads – this was a challenge and a lot of roads in the Area of Outstanding Natural Beauty were affected by overuse or too much signage. Decluttering of signs had taken place in some areas and Community Speed Watch and village gate schemes were in operation in the county. • Green corridors – the principle way to encourage the linking of wildlife sites was through sensitive agri-environmental measures on farms. Public rights of way networks could also be carefully managed for wildlife. Members of the public were encouraged to get involved, for example in habitat mapping. Please visit the website to see opportunities to get involved: http://www.northwessexdowns.org.uk/.
11	<p><u>Wiltshire Online: Digital Literacy in Wiltshire</u></p> <p>Jenny Wilcockson, Digital Literacy Coordinator, gave a presentation on the ‘Wiltshire Online’ project, which aimed to improve access to broadband, ensure that local people could access free computer support and increase usage of online government services.</p> <p>Jenny explained that an estimated 68,000 in Wiltshire had never been online. The majority of these were older people but a high proportion were people with disabilities or families on low incomes. These were the target groups for the programme of delivering free computer support.</p> <p>The benefits of helping people to get online include:</p> <ul style="list-style-type: none"> • Avoiding loneliness and isolation by promoting free/cheap communication via email, Facebook and Skype

	<ul style="list-style-type: none"> • Helping people develop IT skills which could lead to better job prospects and higher earning potential • Helping people to save up to £560 per year by shopping online, using price comparison websites, using online auction websites or paying bills online. <p>As part of the programme, Wiltshire Council was seeking to recruit local volunteer coordinators and digital champion volunteers who could then provide the support in community venues such as libraries, or in someone's own home.</p> <p>Volunteers were now sought from the Royal Wootton Bassett and Cricklade Community Area and people were also invited to pre-register for support. Suggestions were also welcomed as to any WiFi hotspots in the area which might be suitable as venues under the scheme and could receive a 'Wiltshire Online' sticker. It was hoped that local computer groups would get in touch so that learners could be signposted to them. Lydiard Milicent Primary School was already set up and keen to become involved in the project and there were opportunities for Wootton Bassett Academy. Refurbished laptops would soon be available to those who met certain eligibility criteria.</p>
12	<p><u>"Get it Off Your Chest!"</u></p> <p>There was the opportunity for members of the public to raise issues with their local representative. It was agreed that most issues had been covered over the course of the meeting; however Wiltshire Fire and Rescue Service and Wiltshire Police were thanked for their services in relation to recent weather conditions.</p>
13	<p><u>Area Board Priorities' Updates</u></p> <p>Updates were received from members leading on priorities, as follows:</p> <ol style="list-style-type: none"> i. HGV volume and routes – Councillor Lay reported that she was looking for one further member from Lyneham to complete the task group. ii. Affordable housing – Councillor Bucknell had nothing specific to report. iii. Urban sprawl – Councillor Colmer reported that he was disappointed in the Inspector's decision to allow up to 700 dwellings to be built at Ridgeway Farm. He would be speaking to the Spatial Planning team at Wiltshire Council to discuss the potential impact on flooding. iv. Lack of rural bus services – Councillor Roberts reported that a free bus service to ASDA in West Swindon was now in operation. v. Increasing traffic on A419/M4 creating rat-runs – Councillor Groom reported that she had spoken to Swindon Borough Council and consultation would be running from 30 November 2012 until 8 January 2013.

14	<p><u>Evaluation and Close</u></p> <p>The Chairman thanked everyone for attending the meeting. The next meeting of the Royal Wootton Bassett & Cricklade Area Board would be held on Wednesday 23 January 2013. He confirmed that the March meeting would not be taking place due to the run up to the elections, so the area board was hoping to approve as many grant applications as possible at the next meeting in January.</p>
----	--

Chairman's Announcements

Subject:	Integrated Youth Service
Officer Contact Details:	Mal Munday, Head of Service
Weblink:	
Further details available:	

Summary of announcement:

Background

Youth work is a part of the Integrated Youth Service and we provide a range of services to young people from open access youth work to targeted support for those young people with additional needs to young people requiring specialist services.

Youth Work Offer

"Wiltshire Council's Youth work provision is 'needs led', developmental and community based. It is built on a youth work curriculum. This means: that we keep the needs of young people central to our practice at all times; that we work with them in the context of their own communities; and that we help them to develop the wide range of skills, knowledge and understandings they need to make a success of their transition from 'child' to 'independent adult and active citizen'. Clearly, this indicates that there is far more to youth work than the stereotype of supervising young people playing pool and table tennis in youth clubs. The latter bears little relation to the reality and breadth of the work, which when accurately described is all about the skilful and subtle art of informal education" **Learning from Life, July 2010, Wiltshire Council**

Future of Youth Work in Southern Wiltshire

Since 2009 the Council has used the Staffing Funding Formula to allocate the funds we have available across each Community Area so that everyone can see that there is a fair allocation. The formula is as follows:

- 25% of the total budget as a fixed amount for each community area
- 50% based upon the numbers of 13-19 year olds in each community area
- 10% based upon deprivation using the indices of multiple deprivation
- 10% based upon rurality/sparsity
- 5% held centrally to cover emergency and/or training/maternity cover

There are no plans to change this arrangement so whatever the size of the youth work budget it will be allocated across the County using the above. Clearly I do not know what the future holds or how the Council will decide what it's priorities are in the future, but to date Wiltshire has remained committed to providing services for young people at a time when other Authorities have significantly reduced their spend on youth work.

Chairman's Announcements

Youth Advisory Groups (YAGs)

The Wiltshire 11-19 Commissioning Strategy was agreed by Cabinet and the Wiltshire Children & Young People's Trust in September 2011. This included the implementation of a new local Youth Work Offer.

Part of the Wiltshire Youth Work Offer includes the formation of Youth Advisory Groups with standard terms of reference in each community area, led by young people. These groups will be linked to Area Boards and chaired by a young person under 25. Over 50% of the members will be under 19 years of age and the groups will play a key role in improving the coordination of positive activities for young people in local areas. This will involve encouraging partnerships that avoid overlap and fill gaps.

The groups will also be involved in planning and shaping local services from a young person's perspective. Furthermore they will help local young people know what opportunities and activities are available for them to access. Mechanisms will be established so that knowledge and ideas can be shared between the groups across the county.

The purpose of YAGs is to build on the work which Area Boards and young people have completed through their local Community Area Young Peoples Issues Group (CAYPIG) around increasing the voice and influence of young people. YAGs are a development of the CAYPIG and will be very much an opportunity for young people to hold local providers of services, including Wiltshire Council, to account for the service they provide and to also work with young people to see how we can improve services. It is for each Area Board to decide through consultation with young people whether they wish to retain the CAYPIG and link this to the YAG or to replace the CAYPIG with the YAG. This is a local decision and to date across the County different community areas have taken different decisions which is fine as we are keen to respond to local demands. This is part of our ongoing commitment to ensure that young people are involved in influencing the design and delivery of services they use and key to this is the involvement of young people in Area Boards

Subject:	Wiltshire Online: Connectivity and Provision
Officer Contact Details:	Wiltshire Online Team
Weblink:	www.wiltshireonline.org

Summary of Announcement:

The Wiltshire Online Programme aims to bring availability of standard and superfast broadband to homes and businesses across the county.

The main aims of the programme are:

- A minimum of 85%, hopefully up to 95% of premises being able to access superfast broadband by 2015
- All premises to have access to a minimum broadband service of 2Mbps by 2015.

The procurement for superfast broadband was launched on 2 July with British Telecom being announced as preferred bidder on the 12 November. Following a period of contract finalisation and final approval by the government, Wiltshire Council is anticipating signing the contract at the end of January.

In February, the Wiltshire Online Programme should then be able to provide details about the overall percentage coverage of superfast broadband, the technologies to be used and high level information about the rollout plans. An update will be given to Area Boards either by providing a chairman's announcement and links to the Wiltshire Online Web site, or by a presentation.

Once the contract has been awarded, BT will build their delivery team and start upon their detailed surveying of the infrastructure across Wiltshire. Surveying will occur in phases across Wiltshire with the network rollout following shortly afterwards in that area. The timescales for this and the number of surveys to be completed will be shared after the award of the contract.

Though specific information about each community area will not be available from February, the Wiltshire Online Programme will be able to provide more specific information as the project progresses through the phases of implementation. Ahead of each phase each Community Area affected will be provided with detailed information about the forthcoming rollout particulars, including, practical advice and also guidance on how to respond to any questions.

At any time the website www.wiltshireonline.org will have the most up to date information and the Wiltshire Online Team is available to speak to.

Subject:	Legacy for Wiltshire
Officer Contact Details:	Carlene Robinson Senior Project Support Officer 01225 713152 Carlene.robinson@wiltshire.gov.uk
Weblink:	Follow 2012 A year of Celebration at:  
Further details available:	Carlene Robinson Senior Project Support Officer 01225 713152 Carlene.robinson@wiltshire.gov.uk

Summary of Announcement:

This year has been an overwhelming success for Wiltshire and it was wonderful to see our communities come together and celebrate. The community spirit and sense of pride that was apparent across the county was unique, and to see more than half our population attend this year's events just shows what we can achieve when we work together.

The challenge now is to keep that spirit and sense of achievement and pride alive, and to create a lasting legacy for Wiltshire. Keeping the momentum of this year going into 2103 and beyond will be good for our county. We need to take every opportunity to encourage communities to continue to come together, to take action to keep our economy buoyant and to encourage people to keep active and healthy.

This year we held a series of community evening events that provided a forum to share ideas and plans and to update on key information. We would like to reconvene these meetings in the new year to focus on what we can do in 2013 to create a lasting legacy and by working together how we keep the success of this great year going.

We would like to invite you to attend one of the following events;

- Wednesday 16 January, at the Corn Exchange, Devizes**
- Wednesday 23 January, at the Guild Hall, Salisbury**
- Thursday 31 January, at County Hall, Trowbridge**
- Thursday 7 February at the Town Hall, Chippenham**

All the evenings will start with tea and cakes at 6pm. The meeting will start at 6.30pm, finishing by 8pm.

Chairman's Announcements

Subject:	Joint Strategic Assessment for Health and Wellbeing 2012/13
Officer Contact Details:	Aimee Stimpson - Aimee.Stimpson@wiltshire.gov.uk or 0300 003 4566
Weblink:	http://www.intelligencenetwork.org.uk/health/jsa-health-and-wellbeing/

Summary of announcement:

The JSA for Health and Wellbeing 2012-13 is now available and can be downloaded from the [Wiltshire Intelligence Network website](#). For a printed copy please contact Aimee Stimpson in the first instance - Aimee.Stimpson@wiltshire.gov.uk or phone 0300 003 4566.

The Joint Strategic Assessment for Health and Wellbeing 2012/13 provides a summary of the current and future health and wellbeing needs of people in Wiltshire. It has been developed with a clear ambition to further improve the scope and quality of our data, centred on transforming data into knowledge and knowledge into wisdom to provide a comprehensive picture of local needs. The 2012/13 version concentrates on the key facts and key messages along with a focus on 'topic reports', which are areas identified as benefiting from new research or collation of existing disparate knowledge. In order to continue to provide the breadth and depth of information required, the Wiltshire Intelligence Network website has been utilised to host over 1,000 pages of supporting assessments, briefings and resources presented in an accessible way.

The JSA focuses on 5 key health and wellbeing challenges for Wiltshire:

- Identifying and supporting complex and vulnerable families
- Reducing the harms associated with alcohol and drug misuse
- Supporting increasing numbers of people with long term health conditions to manage their conditions
- Improving people's mental health and emotional wellbeing
- Reducing the number of long term care home placements

The production of an annual JSNA was made a statutory requirement in the Local Government and Public Involvement in Health Act, 2007. The production of an annual JSNA remains a statutory requirement and this JSA for health and wellbeing fulfils the requirements of statutory JSNA.

Many thanks for those who contributed to this assessment.

In addition to the main report and supporting information there is also a 2-page Executive Briefing that explains what the JSA is, what the key facts and issues are; and shows the range of topics covered. It can be downloaded from the Intelligence Network page.

Subject:	Impact of Welfare Reform
Officer Contact Details:	Emma Cooper Community Partnership Manger 01225 718627 Emma.cooper@wiltshire.gov.uk
Weblink:	http://www.wiltshire.gov.uk/counciltaxhousingandbenefits/welfare2012reform.htm
Further details available:	From Wiltshire Council on: 0300 4560100

Summary of Announcement:

On 8 March 2012 the Welfare Reform Act 2012 was approved. This government change to welfare is designed to simplify the benefit system and encourage people to work. It will affect many people across the country and if you are in receipt of benefit, or an employer, then it will affect you too. The council is working with partners to make sure information and support is available to all those who need it. The changes include:

- Benefit cap
- Under-occupation rules (housing benefit)
- Universal credit
- Disability Living Allowance
- New Council tax scheme
- New social fund

Further information is available on the council's website: <http://www.wiltshire.gov.uk/counciltaxhousingandbenefits/welfare2012reform.htm>. Or telephone the council on: 0300 456 0100

An 'infographic' has been commissioned by Wiltshire Money which is the financial inclusion partnership for the county. The film is less than 4 minutes long and we will watch this now: <http://www.youtube.com/watch?v=dd29tTwwT8>



Royal Wootton Bassett & Cricklade Area Board Review 2009 - 2013

Royal Wootton Bassett & Cricklade Area Board is 4 years old!

The Area Boards are a new way of working in Wiltshire to bring local decision making back into the heart of the community. They are a formal part of Wiltshire Council that work to find solutions for local issues such as road repairs, traffic problems, speeding in villages, litter, and facilities for young people.

Since the Area Board began back in April 2009, your local councillors have been working hard with local partners to make big differences in your community area, and as the first 4 years of the Area Board come to a close, it provides an opportunity to look back over the period and review what your Area Board has achieved for you.

Working for the community



Since 2009, local people have submitted approximately 112 issues to the Area Board for action via the Community Issues System.

Issues submitted have included concerns regarding speeding traffic, pedestrian safety, graffiti and problems with HGV movement.

Approximately 88 of these issues have now been resolved and the remainder are under active consideration.

Focusing on priorities



The Area Board ran an event on 28 March 2012 at Cricklade Town Hall to discuss the Joint Strategic Assessment for the community area and to identify key priorities.

As a result of the event, the Area Board has been focussing efforts on the following issues which came out as the

community's key priorities:

- Heavy goods vehicles – volumes and routes
- Affordable Housing
- Expansion of Swindon – the Board opposed development of 800 houses on the site at Ridgeway Farm
- Bus Services in rural areas
- Traffic on A419

A year of celebration!



Following the Royal Visit in 2011 and the granting of the title Royal Wootton Bassett to mark the role played by the town in the repatriation of service personnel from Afghanistan, in 2012 the Board supported the Queens Diamond Jubilee celebrations, The Olympics and the Paralympics. Many grants were awarded to support local celebrations, including:

- The Flower Ladies from Christ Church, Broad Town were awarded £250 to support the Flower Festival and Scarecrow Trail in the village.
- The High Bailiff of The Hundred and Borough of Cricklade and the Officers of the Court Leet were awarded a grant of £960 to support the Cricklade Diamond Jubilee Celebrations.
- The Sacred Heart Flower Group was awarded a grant of £400 to support its part in the Royal Wootton Bassett Flower Festival.
- Royal Wootton Bassett Diamond Jubilee Festival Committee was awarded £1,855 towards the cost of the Diamond Jubilee Festival.
- Royal Wootton Bassett Flower Club was awarded £200 to support the Jubilee Flower Displays in the High Street.
- Royal Wootton Bassett Methodist Church was awarded a grant of £200 to support Royal Wootton Bassett Festival of Flowers
- Purton Diamond Jubilee Committee was awarded £1,000 to support the 'The Village Entertains The Village' Diamond Jubilee Festival in the village.



In addition, a tent showcasing all of the great things that happen in the Area was on display in Salisbury Cathedral

Close for the Queen's visit. The tent was the product of joint working with the town and parish councils in the area and displayed many interesting exhibits.

Supporting community groups

Since its formation in 2009, the Royal Wootton Bassett & Cricklade Area Board has awarded over £195,000 to support local community projects in the area, some of the projects supported are listed below:

- Wootton Bassett Bowls Club – New Age Bowls
- Purton and Cricklade Young Farmers Club – Outdoor Trip – Acorn Adventure Brecon Beacons
- Purton Historical Society – Plaque to commemorate an Astronomer Royal buried in Purton
- Lyneham Guide and Scout HQ Association – Relocate and refurbish Lyneham Guide and Scout HQ
- Lyneham Village Pre-School – Expansion of School
- Cricklade Country Market – Local advertising/ display for the local Community Market
- Cricklade Cricket Club – Installation of rabbit proof fencing
- Cricklade Jenner Hall – Repairs to Hall Roof
- Wootton Bassett & Cricklade Extended Services Network – Activities over the holidays
- Project to promote the market towns to visitors.
- Wootton Bassett Friends of Guiding – Refurbishment of Guide Hut
- Bath Spa University – Developing emotional resilience in local schools
- Purton Parish Council - Tables and Trolley for Millennium Hall
- Lyneham Village Hall – Block Paving around Village Hall
- Lyneham & Bradenstoke Parish Council - RAF Memorial Stone, Bench Seat and Landscaping
- Crosslanes project in Purton WC Highway
- Wootton Bassett & District Sea Cadets - Rowing Scheme and qualifications for sea cadets
- Latton Parish Council - Latton Jubilee Garden
- Jubilee Gardens – New Signage
- Hook Village Toddler Group – Hook Village Toddler Group
- Tockenham Parish Council – Create a Parish Plan

Working with people with dementia



The Area Board has been pioneering the [Wiltshire Voices project](#) with a focus on people living with dementia.

The project was launched on 2 March, 2012 with a stakeholder event at the Marsh Farm Hotel – over 60 local groups and individuals attended the event. There followed a series of workshops and activities with people who live with dementia that will culminate with a film produced by BAFTA Award winning film makers True Vision.

An early outcome of the project was the launch of a fortnightly memory cafe in the Royal Wootton Bassett Civic Centre.

Localising services



The Board is well underway with its plans to deliver two new community campus sites at Cricklade and Royal Wootton Bassett. The two campus complexes are being developed with input from local people and will provide the services communities need in fit-for purpose buildings designed to meet the needs of future generations. Shadow Community Campus Boards have been established reporting regularly to the Area Board on progress.

Local Highway Improvements



The Area Board has established a Community Area Transport Group to prioritise local highway improvements. The Board has a delegated budget and each year looks to make improvements in the area. Recently delivered schemes have included:

- Broad Town: white gates to reduce speeding – £2,927
- Lydiard Millicent: white gates to reduce speeding – £1,286
- Cross lanes: speed reduction measures – £15,000
- Lydiard Millicent: C16 Stone Lane project to reduce traffic speeds -£6,000.

Community Asset Transfers

The Area Board agreed to transfer areas of land owned by Wiltshire Council to the following community groups:

- Redhills Playing Field, Broad Town, to Broad Town Parish Council.
- Six individual plots of land at Wootton Bassett, to Royal Wootton Bassett Town Council.
- Land adjacent to Bushton Village Hall, to Clyffe Pypard Parish Council.

A word from the Chairman

The Area Board is intended to represent the public face of Wiltshire Council locally within our community area and over the first 4 years of our new unitary council that is what we have sought to do. This is not though, simply a one-way process, and I believe that the Board, through collective action and supporting the efforts of individual unitary councillors has also ensured that local concerns are effectively represented within Wiltshire Council as a whole.

The Board has worked closely with each of our parish and town councils as well as with many individuals who have engaged with and supported the Area Board through their participation in task groups, individual projects and the many grant applications from local voluntary groups for the benefit of our wider community. While formal public meetings are only one aspect of the Area Board's work, we have rotated these between Royal Wootton Bassett, Cricklade, Lyneham and Purton so as to ensure that the Board is actively seen as representing the concerns and interests of the wider community area.

Thank you to all those many people who have contributed so enthusiastically to the work of the Area Board over the first four years. The Board always was and has increasingly become your Area Board so please do continue to help shape its future development in the years ahead.

Cllr Peter Doyle
Chairman

Royal Wootton Bassett & Cricklade Area Board

Your councillors:

Peter Doyle (Chairman) – peter.doyle@wiltshire.gov.uk
Peter Colmer (Vice Chairman) – peter.colmer@wiltshire.gov.uk
Allison Bucknell – allison.bucknell@wiltshire.gov.uk
Mollie Groom – mollie.groom@wiltshire.gov.uk
Jacqui Lay – jacqui.lay@wiltshire.gov.uk
Bill Roberts – bill.roberts@wiltshire.gov.uk

Your Community Area Manager:

Penny Bell – penny.bell@wiltshire.gov.uk 01249 706613

Crime and Community Safety Briefing Paper Wootton Bassett & Cricklade Community Area Board – Jan 2013



1. Neighbourhood Policing

Sector Commander: Insp Mark Thompson

NPT Sgt: Martin Alvis

Wootton Bassett Town Centre Team

Beat Manager – PC Nick Spargo

PCSO – Jim Wale

Wootton Basset Lyneham & Rural villages Team

Beat Manager – PC Steve Porter

PCSO – Andy Singfield

Cricklade & Purton Team

Beat Manager – PC Lee Kuklinski

PCSO Nicola Allan

PCSO Richard O'Halloran

2. NPTs - Current Priorities & Consultation Opportunities:

Up-to-date details about Neighbourhood Policing Teams including team membership, current priorities and forthcoming community consultation events can be found on our Wiltshire Police Website.

□ Visit the new and improved website at: www.wiltshire.police.uk

3. Performance and Other Local Issues

Since the last area board we have seen a decrease in anti-social behaviour. The teams have patrolled the areas that were of a concern and taken pro-active measures where possible. We have however had some incidents of criminal damage both in Cricklade, where paint was sprayed on various properties and in Royal Wootton Bassett where damage has been caused to some motor vehicles.

In the last couple of weeks in Royal Wootton Bassett we have seen a spate of thefts from motor vehicles. We have sent a request out through the media asking that valuables are not left unattended. As yet we have no suspects for the offences.

Face book has been running now since the last meeting and is steadily picking up momentum. If you have not visited Royal Wootton Bassett and Cricklade Police, go onto the page, like us and you will get regular updates on Policing in your community.

Finally, a fairly peaceful Christmas and New Year to report on with nothing of great significant other than some minor alcohol related incidents.
 Can I take this opportunity on behalf of the team to wish you all a safe and happy New Year.

Inspector Mark Thompson

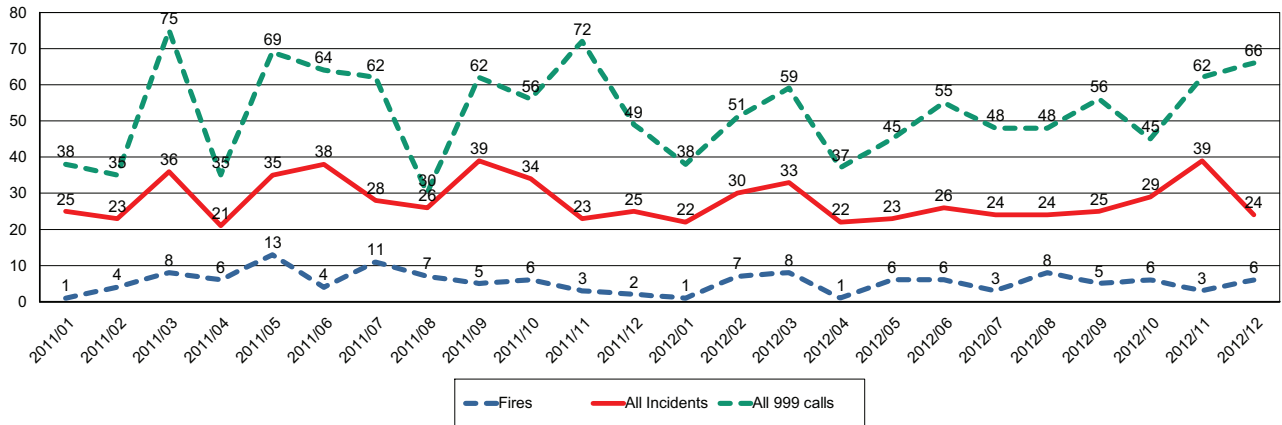
EO Royal Wootton Bassett						
EO Royal Wootton Bassett	Crime				Detections	
	December 2010 - November 2011	December 2011 - November 2012	Volume Change	% Change	December 2010 - November 2011	December 2011 - November 2012
Victim Based Crime	801	850	49	6%	17%	27%
Domestic Burglary	47	48	1	2%	6%	23%
Non Domestic Burglary	118	109	-9	-8%	3%	2%
Vehicle Crime	78	62	-16	-21%	4%	6%
Criminal Damage & Arson	177	182	5	3%	15%	16%
Violence Against The Person	113	151	38	34%	48%	59%
ASB Incidents (Year to Date)	550	483	-67	-12%		
Wiltshire Police are compared against a group of 8 most similar forces. Wiltshire Police have performed in line with peers and better than average for Victim Based Crime and Domestic Burglary in the previous 12 month period (November 2011 - October 2012).						
* Detections include both Sanction Detections and Local Resolution						



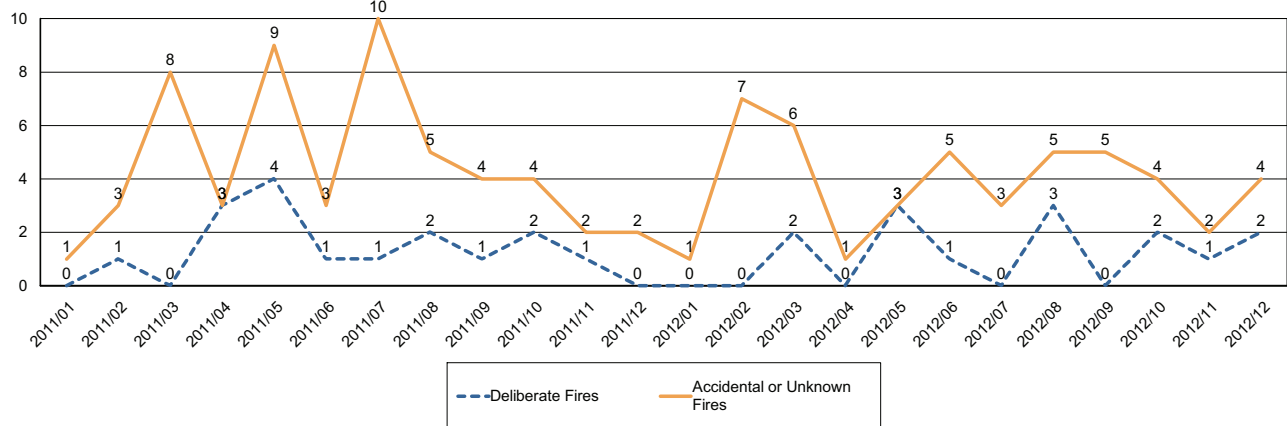
Report for Wootton Bassett & Cricklade Area Board

The following is an update of Fire and Rescue Service activity up to and including December. It has been prepared using the latest information and is subject to change.

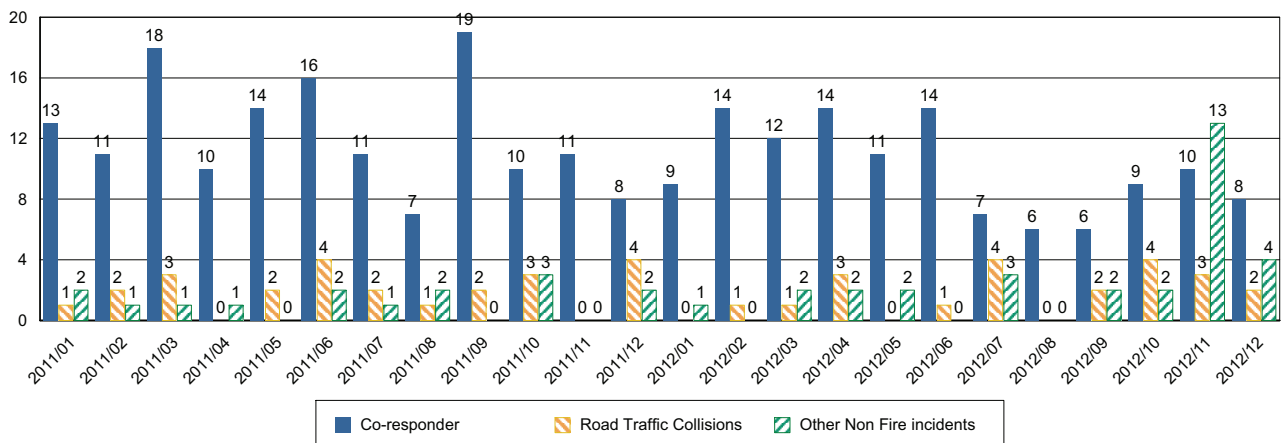
Incidents and Calls



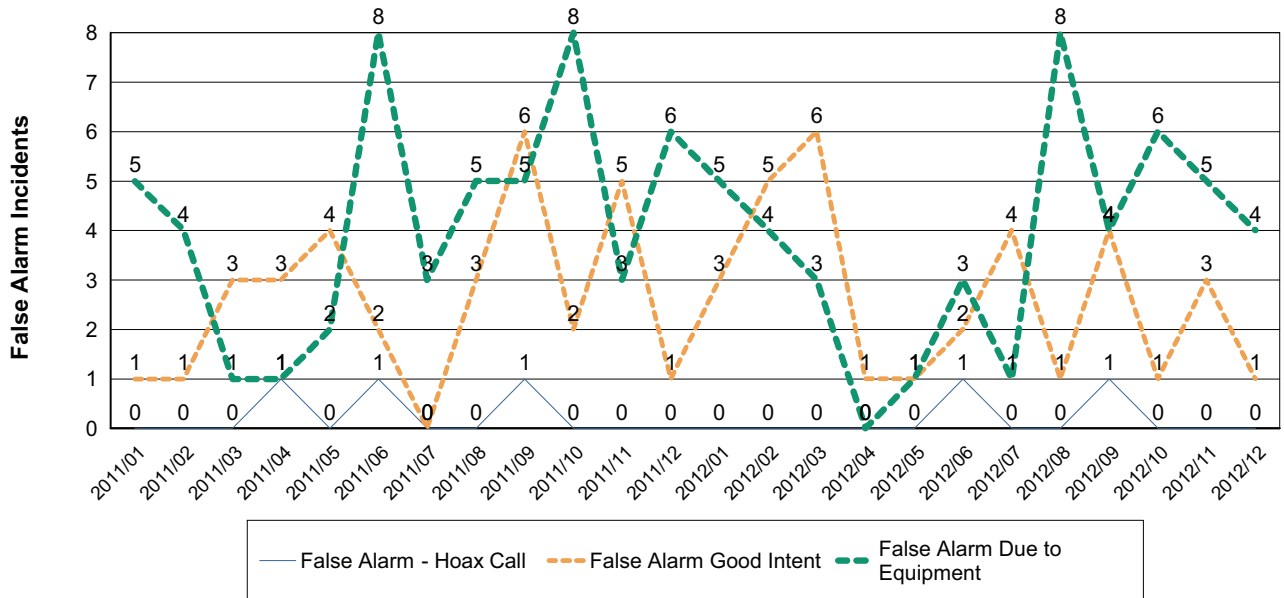
Fires by Cause



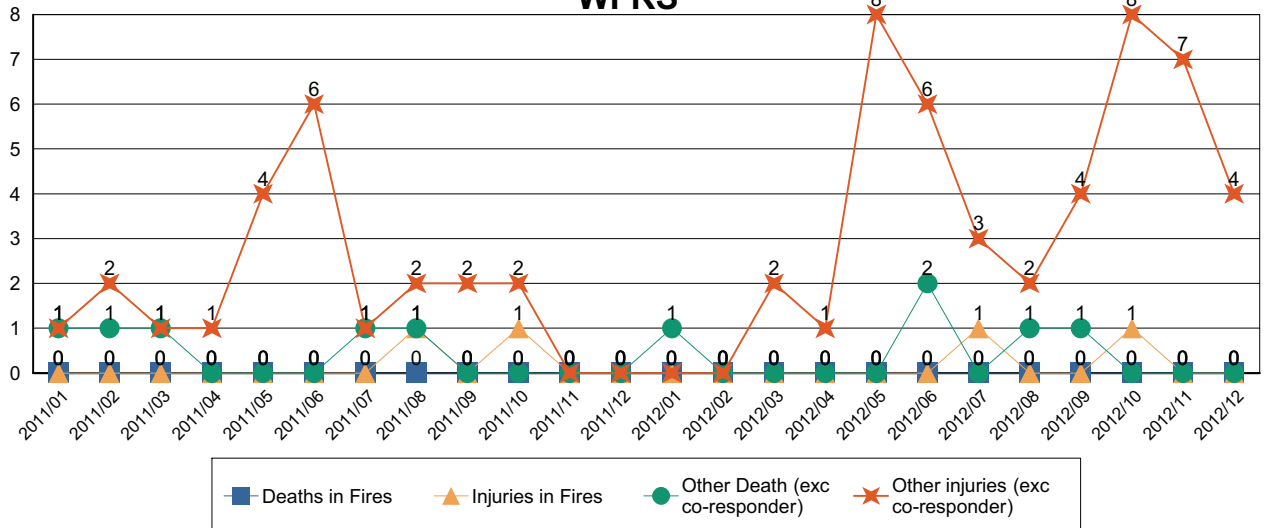
Non-Fire incidents attended by WFRS



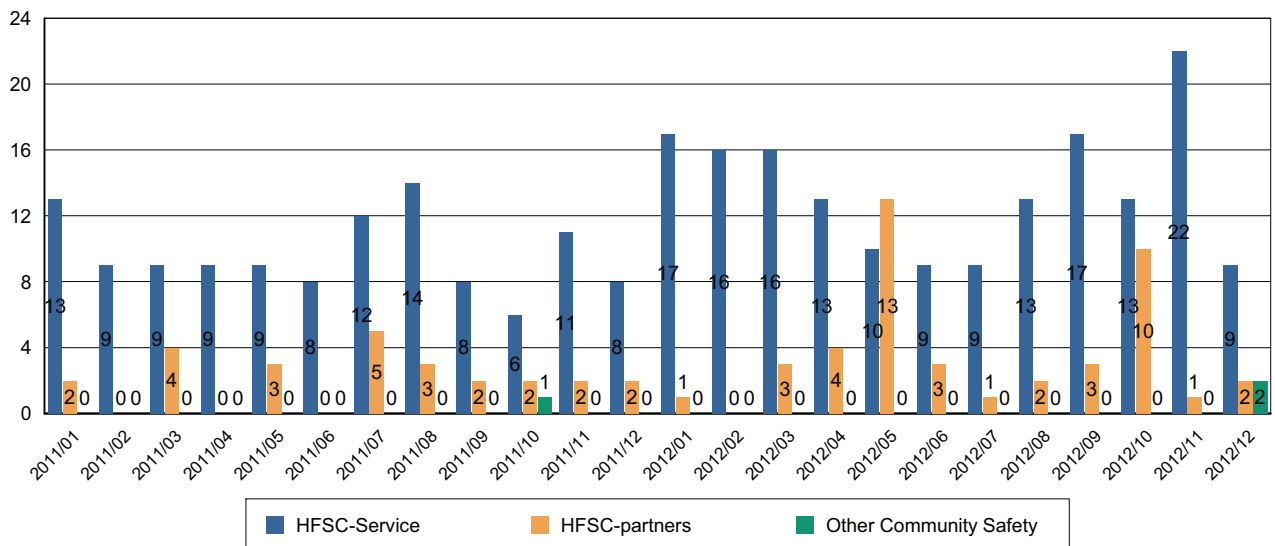
Number of False Alarm Incidents



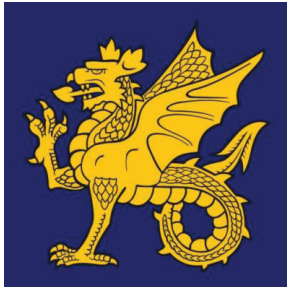
Death & Injuries in incidents attended by WFRS



Home Fire Safety Checks and other domestic safety



Comments and Interventions overleaf



MILITARY CIVILIAN INTEGRATION PARTNERSHIP
(INCORPORATING WILTSHIRE'S COMMUNITY COVENANT PARTNERSHIP)

Issue

The significant military presence in Wiltshire is changing. The development of Britain's first 'Super Garrison' in the Salisbury Plain area, closure of RAF Lyneham and move of Defence Technical Training to the site, development of the Personnel Recovery and Assessment Centre at Tedworth House, and the Government announcement on Transforming the British Army (known as [Army 2020](#)) will have far reaching implications for local communities across the county for the foreseeable future.

Although there is an awareness of these changes taking place in the Defence community, [Wiltshire Council](#) working with [43 \(Wessex\) Brigade](#) and partners needed to assess what this means in terms of infrastructure, impact on the economy and delivery of services. Therefore, the Military Civilian Integration (MCI) Partnership was set up to shape and positively influence these changes, where possible.

The work of the MCI Partnership is based upon what is known as the Army's Firm Base¹ policy and the Wiltshire Community Plan².

Aim

The aim of the MCI Partnership in Wiltshire is to optimise the *economic* and *social* benefits of the military presence in the county. In turn, such integration will benefit Armed Forces personnel, their families, veterans, and local communities.

Objectives

The MCI Partnership has 7 main objectives:

- To identify and respond to the changing military 'footprint' in Wiltshire
- To quantify and maximise the economic contribution of the military to the county
- To enable the realignment of service provision by the Council and its partners to meet the changing needs of the military, their families and veterans
- To capitalise on opportunities for regeneration and building sustainable communities in areas with a military presence
- To ensure the county continues to remain an attractive location for our Armed Forces and long-term investment by the MoD
- To encourage local communities to support the Armed Forces through the Wiltshire Community Covenant
- To assist Service leavers, and redundees in particular, in career transition and into employment in Wiltshire, helping soldiers back into society

¹ The 'Firm Base' describes a secure environment, at home and overseas, that sustains the Army, enables training for, and deployment on, operations and ensures the consent and support of the public and host nations. Most of the activities required to support soldiers are linked – welfare and accommodation being good examples. The delivery of these services, therefore, requires working closely with the community (Source: MoD).

² People, places and promises, The Wiltshire Community Plan 2011-2026.

Partnership Activities

Currently, there are 8 'live' projects in the MCI Partnership:

1. Salisbury Plain Super Garrison: The Salisbury Plain Super Garrison is the 'core' project in the partnership. It focuses on plans for the future MoD use of the Salisbury Plain Training Area. Super Garrisons are also being developed in Aldershot, Catterick and Colchester.

2. Lyneham Steering Group: The [Lyneham Steering Group](#) brings together community groups affected by the closure of RAF Lyneham and transition to [Defence Technical Training](#) to provide a 'voice' for their concerns and resolve issues, where possible. RAF Lyneham closed in December 2012, and it is anticipated that Defence Technical Training will transfer to the site in a series of phased moves. Also, see 3 below.

3. Defence Technical Training Planning: The purpose of this project is to manage the MoD/Wiltshire Council Planning relationship, working with the [Defence Infrastructure Organisation](#), for the move of Defence Technical Training to Lyneham from 2013. It is anticipated that a Planning Application will be made in 2013 and training will start at Lyneham in late 2015. The aspiration is for Defence Technical Training to be fully established on site by 2020. See [Development Plans for the Lyneham Site consultation](#)

4. Community Covenant: [Wiltshire's Armed Forces Community Covenant](#) was launched in August 2011. The aim of the Community Covenant, including the grant scheme, is to encourage local communities to support the Service community and nurture understanding and awareness amongst the public of issues affecting the Armed Forces Community. Also, Wiltshire launched its [Armed Forces Veterans Charter and Action Plan](#) in December 2011.

5. Land Use Planning: The purpose of this project is to manage the MoD/Wiltshire Council Planning relationship involving MoD sites across the county, including building sustainable communities. This work includes housing and builds on an earlier study, partly funded by [Plain Action](#) and the [Homes & Communities Agency](#), to improve the understanding of existing communities in the context of the Super Garrison development.

6. Joining things up: The purpose of this project is to ensure effective service delivery to military families, including veterans, by statutory and voluntary agencies including NHS Wiltshire. As part of this work Wiltshire Council is supporting the development of the [Personnel Recovery and Assessment Centre](#) (PRAC) at Tedworth House, with its 'Support Hub', funded by [Help for Heroes](#) and [The Royal British Legion](#)

7. Enterprise & Employment: This is a new project to assist Service leavers, including redundees, in career transition. It will fit with Wiltshire's wider work on business start-up and enterprise support.

8. Research: The evidence base for the partnership comes from:

- [Military Presence and Economic Significance in the South West Region](#) This report examined the military presence in the South West (March 2009)
- [Envisioning the Future](#) This report provided a comprehensive assessment of the military presence in Wiltshire (July 2009)

The latest report [Military population in Wiltshire and the South West region](#) was produced in October 2012. This report updates key data and highlights further military changes due to take place in the next 5 years.

Partnership Organisation

The MCI Partnership Board provides strategic direction and guidance to the partnership and MCI Delivery Group in particular.

The Board comprises: The Leader Wiltshire Council, Commander 43 (Wessex) Brigade, Cabinet Member for Economic Development & Strategic Planning, Corporate Director, Service Director Economy & Regeneration, Swindon & Wiltshire Local Enterprise Partnership representative, Community First/Plain Action, Defence Infrastructure Organisation, Defence Technical Training, Homes & Communities Agency, and project leads as necessary. The Board meets every 8-10 weeks.

Further Information

For further information, please contact: Ian Cambrook, MCI Manager, Pidela Consulting Ltd, at ian.cambrook@googlemail.com or go to the [MCI pages](#) on the Wiltshire Council website.

PC/MCI/January 2013

December 2012 update

Get the jab, get Flu Safe

NHS Wiltshire is encouraging people to have their flu jab. Flu is a highly contagious infection that anyone can catch, but it can be very serious for some. For most people flu is a relatively mild illness from which they recover in a week or two – yet every year people become seriously ill because they don't get their free flu jab.

People in the 'at risk' group are more vulnerable to the effects of seasonal flu and it's recognised that they can go on to develop a more serious illness, such as bronchitis and pneumonia.

Flu is not the same as a cold and it affects people of all ages. If you're in any of the at-risk groups listed below you can get a free flu jab from your GP.

- everyone aged 65 years and over (including those who will be 65 by March 31 2013)
- all pregnant women irrespective of their stage of pregnancy
- Adults and children over six months with long term heart, lung, kidney, liver or neurological conditions
- people with diabetes
- anyone who has a reduced immunity because of an illness or medical condition
- people with asthma
- anyone in long-stay residential care
- carers of disabled or elderly people and healthcare workers that are in direct contact with patients

The flu jab is completely safe, even for pregnant women, and it can't give you flu as it does not contain any live virus.

Get the best protection for yourself and your family by being flu free this winter and book your appointment today.

Choose Well campaign

NHS Wiltshire is appealing to the public not to go to A&E departments this winter unless they genuinely have a very serious or life threatening health problem.

Every year hospitals report that the number of people using A&E inappropriately is increasing – costing the millions of pounds – when there are more suitable health services available.

The Choose Well campaign aims to encourage people to find a more appropriate service for minor injuries and ailments. In particular, the campaign will focus on providing information to:

families with young children

young people aged 15 – 24

people with long term conditions such as diabetes or respiratory problems.

The Choose Well campaign asks the public to think about how serious their health problem is and then choose the right service:

- For very minor problems such as a hangover, indigestion, or a grazed knee, people should self-care
- For minor infections, coughs and colds, advice can be given by local pharmacies
- For ailments such as stomach pain and vomiting, a persistent cough or ear pain call your GP surgery, visit your local walk in centre or your minor injuries unit. Details can be found at www.nhs.uk A mobile phone friendly web-link is also available at <http://bit.ly/nhsnwQR>

If you are not sure which service to choose, call NHS Direct on 0845 4647.

Non-Urgent Patient Transport Services

The Department of Health defines non-emergency Patient Transport Services (PTS) as the non-urgent, planned, transportation of patients with a medical need for transport to and from a premises providing NHS healthcare and between NHS healthcare providers.

This can and should encompass a wide range of vehicle types and levels of care consistent with the patients' medical needs.

We are seeking the opinion of local people who use non-urgent patient transport on how the current service is being provided and encourage you to complete the questionnaire and share your views.

Please go to our website to complete our questionnaire:

<http://www.wiltshire.nhs.uk/Default.aspx.LocID-01Inew02q.RefLocID-01I007003001.Lang-EN.htm>

If you would like a hard copy of the Questionnaire, please call the communications department on 01380 736010.

The next PCT Cluster Board Meeting will be held on **Weds 23rd January** – venue TBC Members of the public are welcome to attend. Papers are published a week before the meeting on www.wiltshire.nhs.uk or on request from Stacey Saunders, NHS Wiltshire, email: stacey.saunders@wiltshire.nhs.uk

Update for Wootton Bassett & Cricklade Area Board

Update from	Cricklade Town Council
Date of Area Board Meeting	Wednesday, 23 rd January 2013

Headlines

Neighbourhood Plan – Cricklade Town Council has submitted its application to Wiltshire Council to designate its Neighbourhood Area to be set within the parish boundary. This is currently in its consultation period which runs to Friday, 25th January. The Town Council looks forward to working with the community area and all our neighbouring parishes on various common issues and wishes Royal Wootton Bassett and the North East Wiltshire Villages (NEWV) every success with their own Neighbourhood Plans.

Christmas Competition – The decorations have been put away for another year and to applaud the efforts made by Cricklade residents and businesses, the Town Council celebrated the winners of its annual Christmas competition by presenting a trophy and certificates at the Community & Leisure Committee on 8th January.

Projects

Cricklade's Flood Plan

From droughts and hose pipe bans to flooding and all in the same year! Cricklade has drawn up its own draft Flood Plan which will be posted on our website at www.cricklade-tc.gov.uk. The Town Council is asking for comments and would like to hear from those who would like to join a small band of volunteer Flood Wardens. Orchestrating this and other contingency planning alongside the Town Council is Cricklade's Community Emergency Volunteer (CEV) and we are also now looking for a Deputy CEV to help with this.

Walkers are Welcome

Our Tourism Working Party is currently looking at how to make the most of Cricklade's reputation as an important destination for walkers. With community support, we would like to join other towns and villages across the country and gain *Walkers are Welcome* status. This not only benefits walkers but also helps to keep paths and facilities maintained and to re-generate the local economy. More about this community-led scheme at www.walkersarewelcome.org.uk

Maps for Car Parks

Another project to help steer our visitors around the town – the Town Council is funding large maps for all our car parks.

Path at Long Close – With grant funding through the PIG Scheme and possibly under S106, the Town Council is liaising with English Heritage about building a path across Long Close linking Gas Lane to Whitehorse Road as well as other enhancements to this important historical piece of public open space which is registered as a Scheduled Monument.

Future Events/Dates for the diary

A full list of events in Cricklade can be found at our Events Diary at www.cricklade-tc.gov.uk

- **22nd February** – Cricklade Cinema! *Casablanca*. Town Hall, 8.15pm



Signed: Shelley Parker, Town Clerk

Date: 11th January 2013

Cricklade Campus

Area Board Update 23rd January 2013

Update and next steps

As we updated at the last meeting, on 23rd October Wiltshire Cabinet agreed funding for the aspirational split site Campus proposal for Cricklade, our thanks to Cabinet for allowing this project to move forward. This proposal covers a much enhanced Leisure Centre Building and allows a choice of High Street location dependent on more detailed and fuller public consultation and clarification on whether the existing Police Station is indeed a viable option.

As we updated the Area Board at the November meeting, we worked hard in November and December to update the design brief for the Leisure Centre Building (Stones Lane) and arranging to meet with architects to choose the company to work with on actual building designs for both sites.

During the next few weeks we hope to have presentations for shortlisted architect firms to decide who we will work with to design the campus

It is expected that the two Campus sites will be worked on separately and follow a different timeline as certain items will need to be clarified particularly for the High Street location.

Once the architects have been appointed and have started their work the SCOB will be setting up open sessions to get input on the design work so far and will later be setting up working groups to cover identified areas of the buildings and services.

These working groups will be made up of SCOB members and stakeholders to ensure wider involvement within the community.

Equalities workshop

We held a useful Equalities Workshop on 10th December where there were some really useful discussions. Thanks to those who attended, both local people and representatives of organizations such as Action on Hearing Loss and a number of others.

We are in the process of putting together the feedback from all of the discussions and will share this with you soon.

Cricklade SCOB vacancy - your chance to apply to be involved in the campus project to represent user and community groups

The Cricklade SCOB asked people to express an interest in being involved in the group to represent the interests of the wider community in 2012. We have asked the Area Board to consider an expression of interest which was been submitted for this vacancy.

We also have a vacancy for a representative of user and community groups in the Cricklade area. This is your chance to be involved in the campus project so please apply if you feel you can represent the interest user and community groups in the Cricklade area.

The membership of the Shadow COB will be decided by area board members, and will work with representatives from local community area including; user and community groups, children and young

people, the wider community and town and parish council. There is also a representative of the Area Board on the Shadow COB

The closing date for expressing an interest in the user and community representative for the Cricklade Shadow COB is Thursday 14th February 2013.

If you would like to put yourself forward to represent your community then please download and complete the form linked here www.wiltshire.gov.uk/CrickladeCommunityCampus or complete and return the paper copy attached here.

If you have any questions please email CampusConsultation@wiltshire.gov.uk or telephone 01225 718350.

Cricklade Campus SCOB
January 2013

Cricklade Shadow Community Operations Board (SCOB)

Wootton Bassett & Cricklade Community Area

Expression of Interest

Cricklade Shadow COB – your chance to apply to be involved to represent user and community groups

The Cricklade Shadow COB currently has a vacancy for a representative of user and community groups in the Cricklade area. This is your chance to be involved in the project so please apply if you feel you can represent the interest user and community groups in the Cricklade area.

The closing date for expressing an interest in the user and community representative for the Cricklade Shadow COB is **Thursday 14th February 2013**.

If you would like to put yourself forward to represent your community then please complete the form below and return to the address below.

Name	
Sector, group or organisation you represent	
Your reasons for expressing an interest	
Contact telephone number	
Email	

Please return your form no later than **Thursday 14th February 2013** to:
Campus team, Transformation Programme, Wiltshire Council, County Hall Offices, By The Sea Road, Trowbridge, Wiltshire, BA14 8JN

An electronic copy of this form is available on the Council's website www.wiltshire.gov.uk. You may submit an electronic copy to: campusconsultation@wiltshire.gov.uk

Background

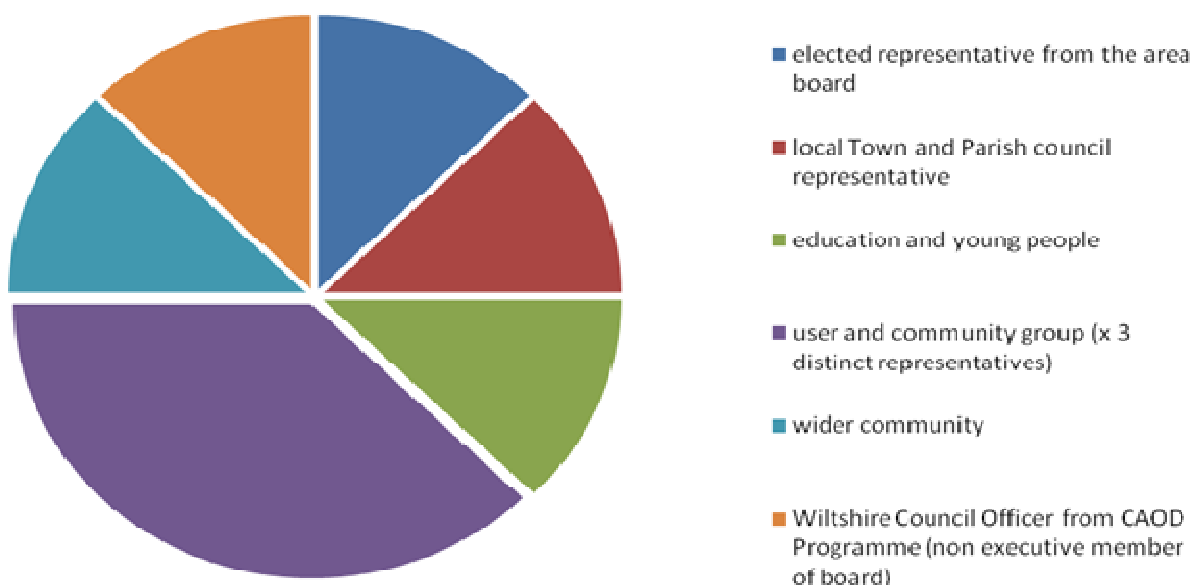
Wiltshire Council is looking to develop community campus facilities within each community area across Wiltshire. In the Wootton Bassett and Cricklade community area it is proposed that two campus facilities are developed, one in Wootton Bassett and one in Cricklade, each of which will serve the local and surrounding area. Each campus will incorporate all or most local services provided by the Council, and potentially partners, and will be designed to meet local needs.

Community involvement and influence in the development of the buildings is crucial to their success and sustainability if we are to provide services people need. The Council would like to test extending that community influence to the day-to-day operation of the campus facilities and as such we are putting in place a Shadow Community Operations Board that will be made up of local representatives. The Community Boards will operate to specific terms of reference agreed by the Area Board and will broadly look at:

- Ongoing effective community consultation and engagement to ensure local people and groups are directly involved in the design of their campus and the identification of the services to be provided.
- Helping to gather valuable information from the testing of community influence in day-to-day operations so in the future the Council can consider a decision as to whether to extend this across the county.

Representation

The Shadow Community Operations Board will consist of an appropriate, mutually agreeable representative from the following broad sectors of the local community area:



- (i) There will be one representative for each party identified.
- (ii) The board will need to nominate a chairperson at its inaugural meeting.
- (iii) The board will need to determine if the suggested representation appropriately reflects the description of the party.
- (iv) There will be up to three representatives identified by the user and community group sector and approved by the Area Board. Such representatives should be selected so as to ensure proper representation from distinct interest groups within that sector.
- (v) The Wiltshire Council liaison representative will be an officer from the Campus and Operational Delivery Programme team and will be invited to sit on the board as a non-executive party.
- (vi) Each party should endeavour to be represented at each formal meeting.
- (vii) Each executive party will have equal rights.

Royal Wootton Bassett Shadow COB update

23rd January 2013

The Royal Wootton Bassett Shadow COB met in December to receive an update on discussions with the MOD which we hope will enable the delivery of our preferred option campus proposal.

At that meeting we heard that discussions are continuing with the MOD and Wiltshire Council is continuing to pursue discussions on the delivery of the Shadow COB's preferred campus proposal.

We decided earlier in 2012 to meet as and when more information was known about discussions to pursue our preferred campus proposal for a newly built facility on a new site that will include a swimming pool.

At their meeting on the 23rd of October Wiltshire Council's Cabinet were also made aware that discussions are continuing and Cabinet noted their continued support for the concept of delivering for the community of Royal Wootton Bassett and that negotiations with the MOD continue regarding this.

At our meeting in December we selected a new chair of Town Councillor Mike Leighfield.

We will provide a further update on the campus project when we have more information

I would like to thank Thomas Woodhouse for all of his hard work on behalf of Shadow COB during his time as chair.

Cllr Mike Leighfield

Chair

Royal Wootton Bassett Shadow Community Operations Board

